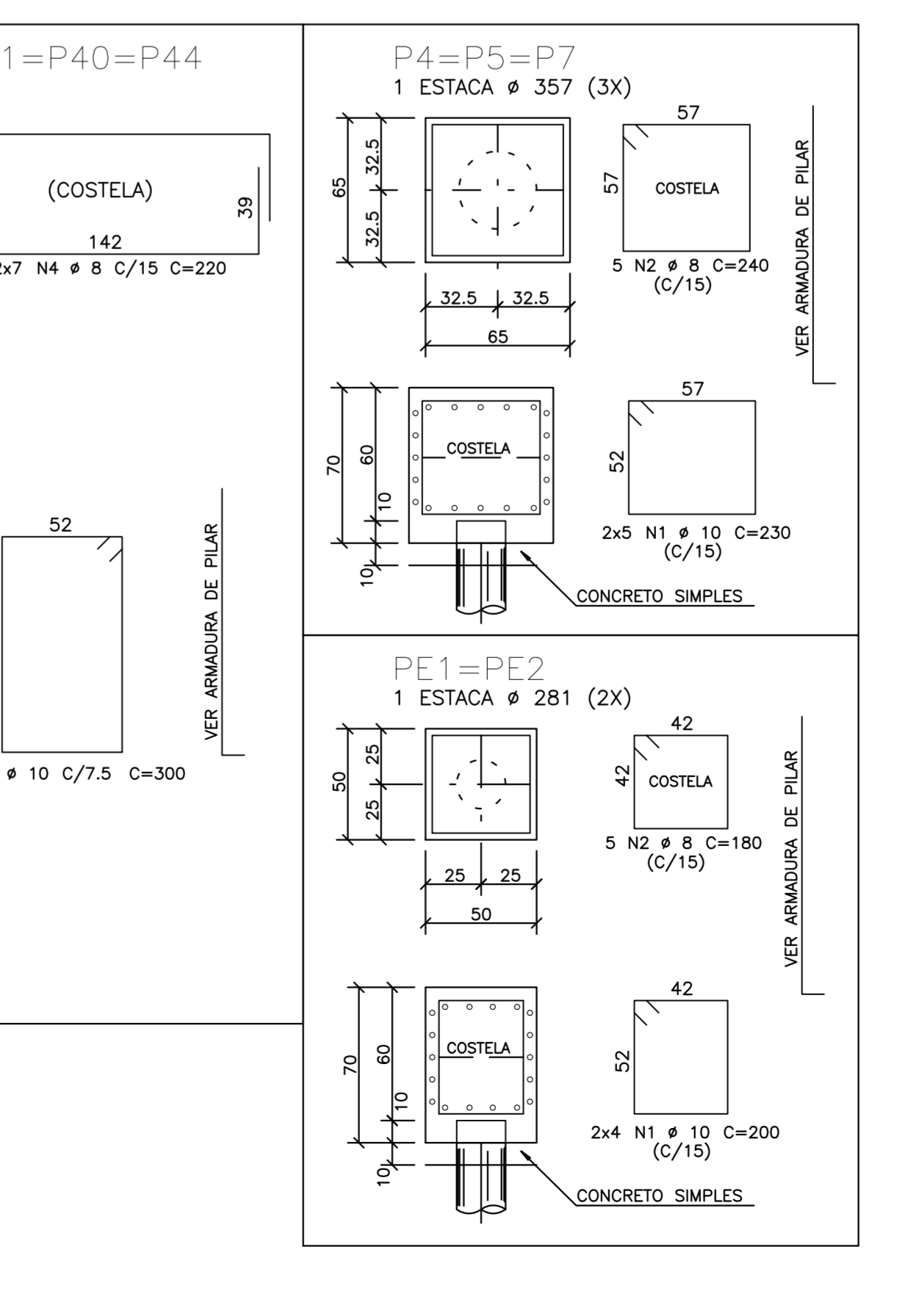
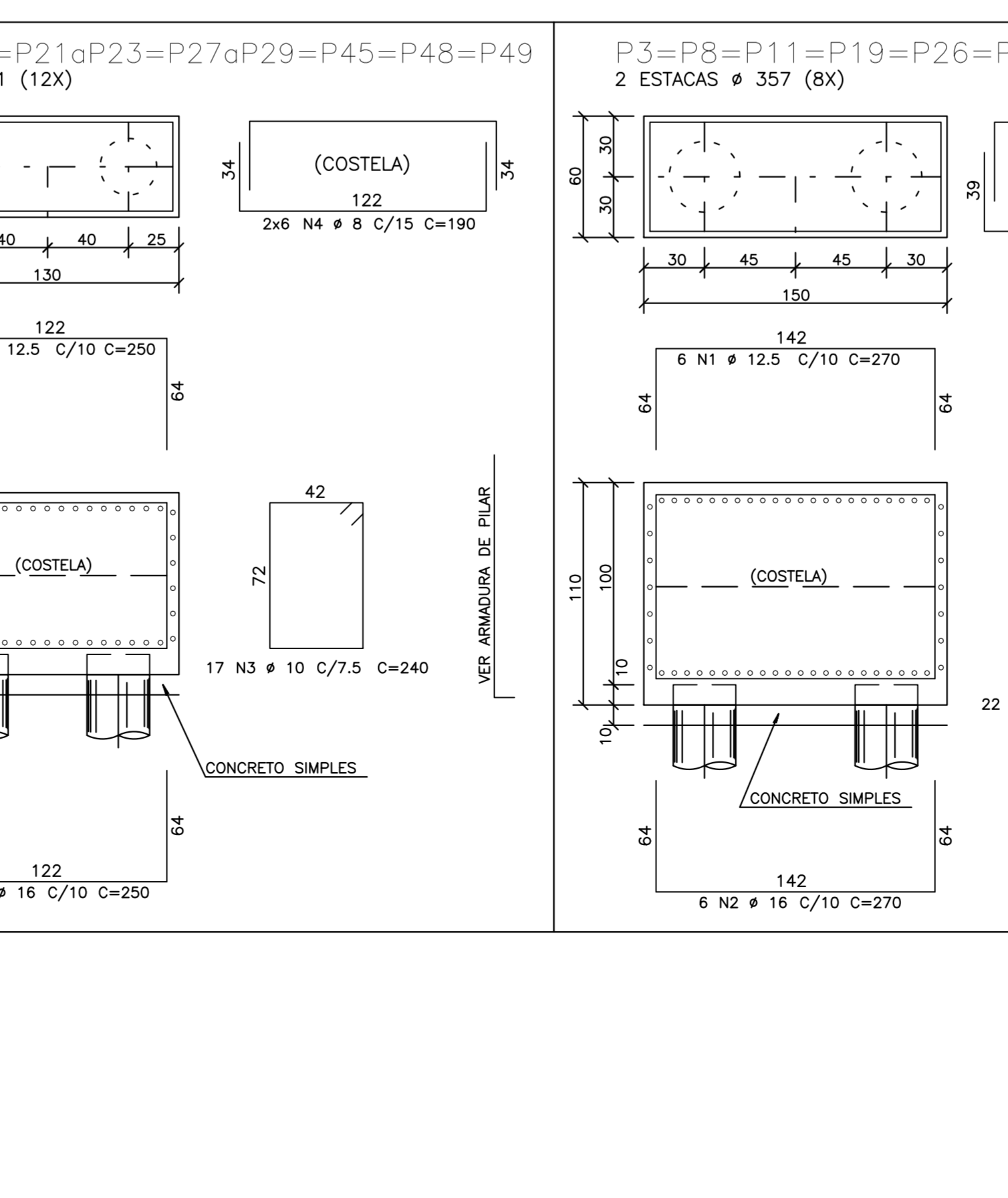
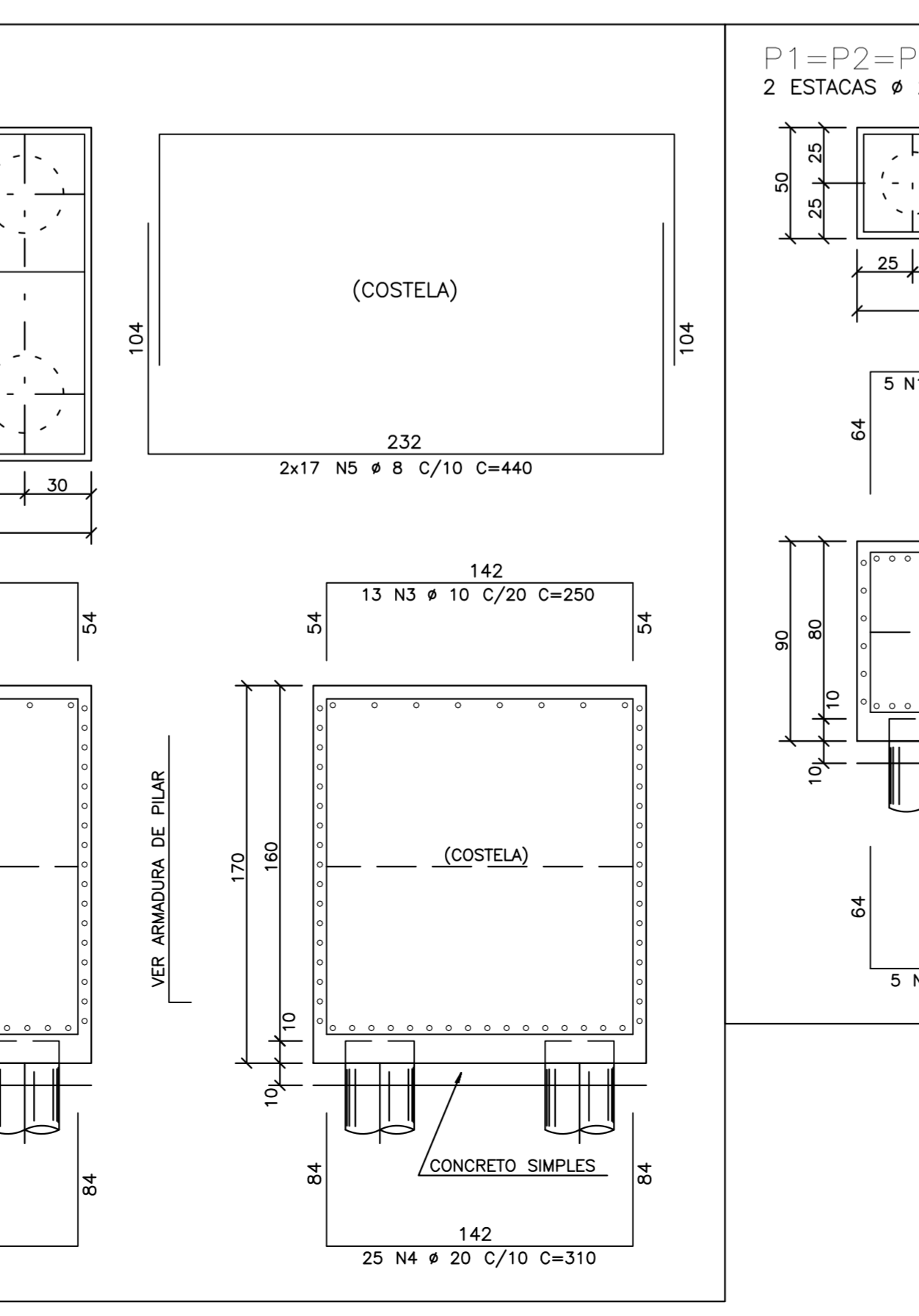
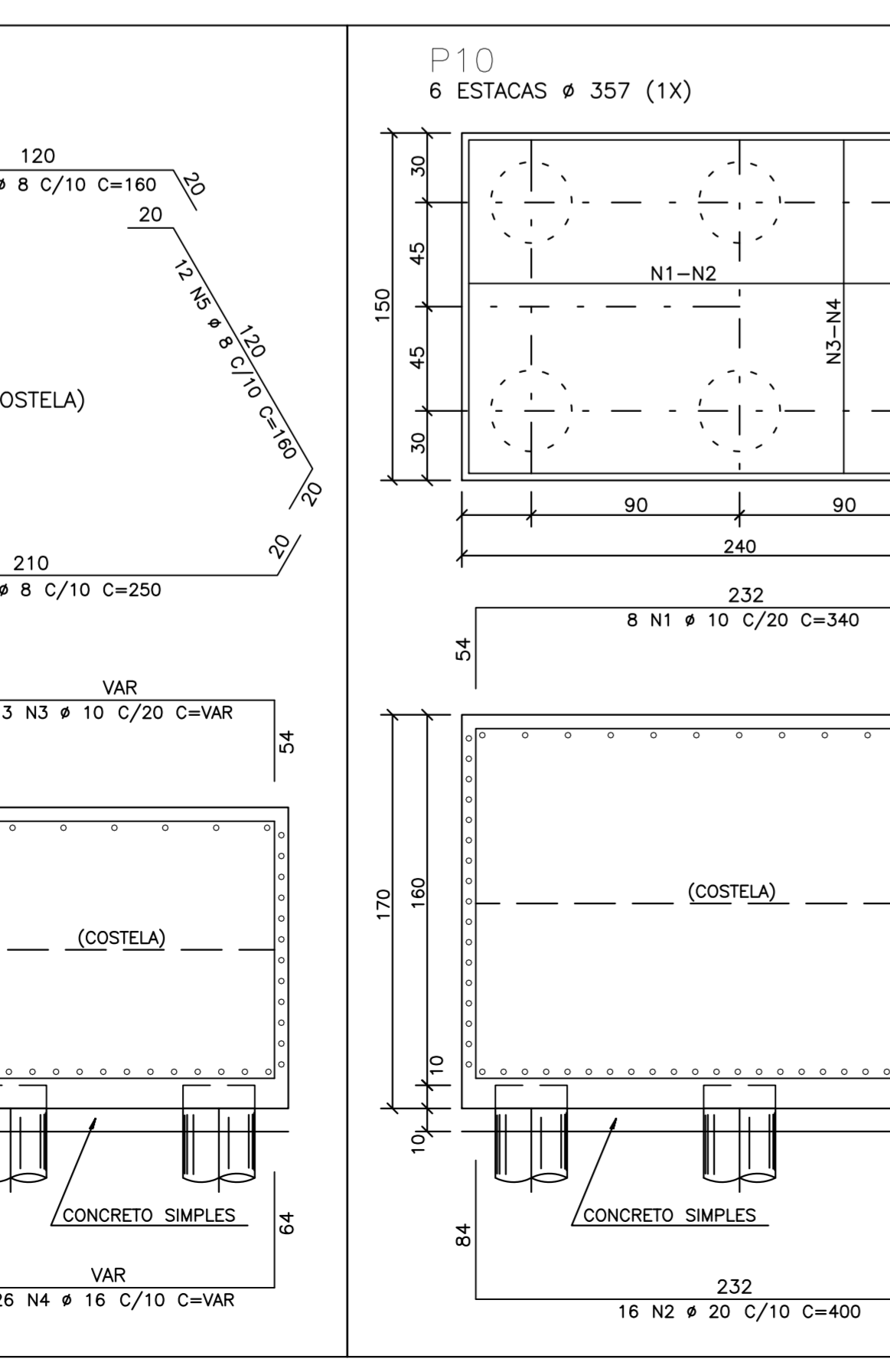
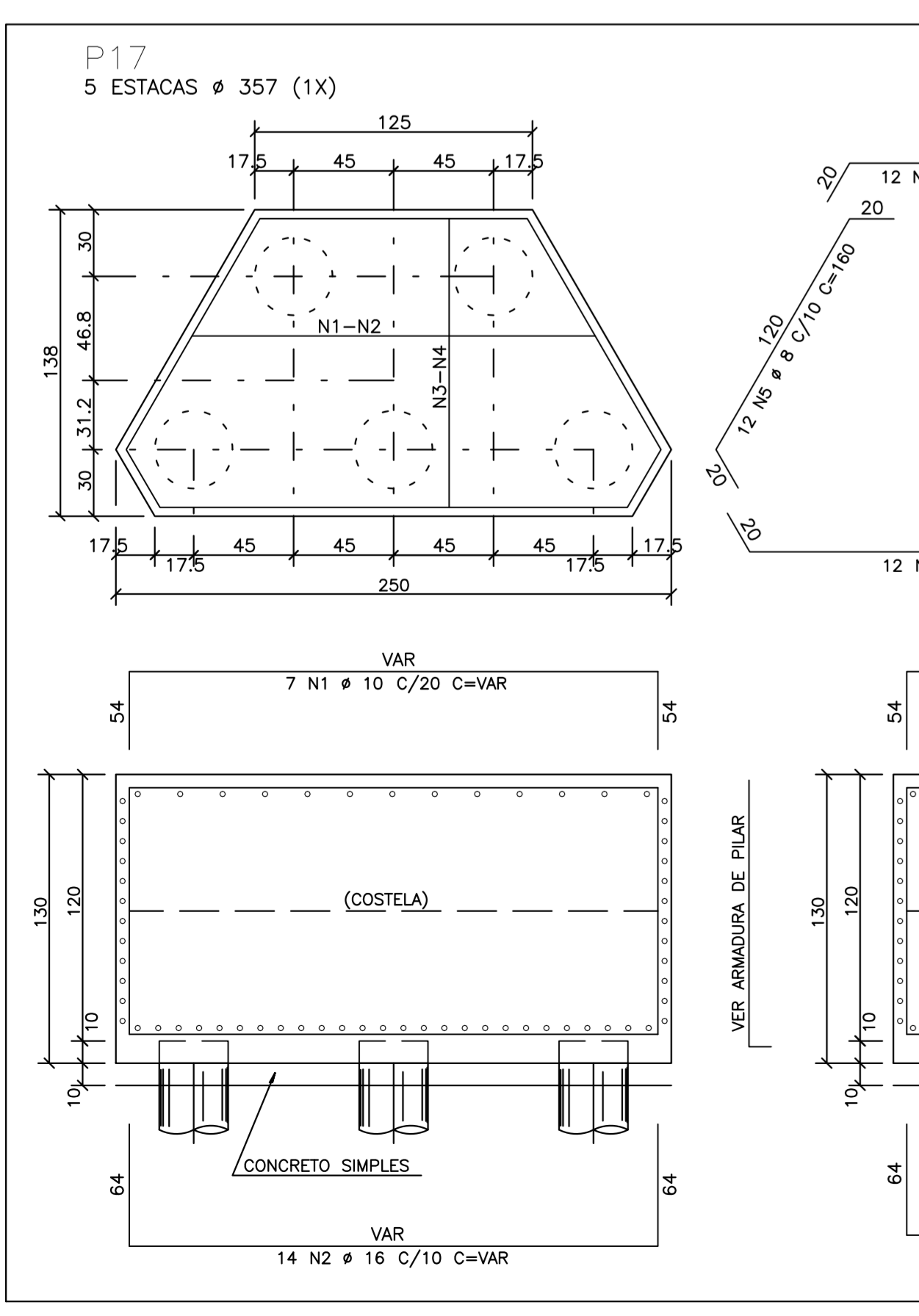


POS	BIT (mm)	QUANT	COMPRIMENTO (cm)	UNIT	TOTAL
PE1=PE2 (X2)	1 16	16	200	3200	3200
P1=P2=P6=P21=P23=P27=P29=P45=P48=P49 (X12)	1 12,5	60	250	15000	15000
P18	1 16	12	145	1740	1740
P24=P30=P36=P43=P47 (X5)	1 12,5	60	250	15000	15000
P4=P5=P7 (X3)	1 10	30	230	6900	6900
P3=P8=P11=P19=P26=P31=P40=P44 (X8)	1 12,5	48	270	12960	12960
P9=P13=P14=P20=P25=P32=P38=P41=P42=P46 (X10)	1 12,5	60	250	15000	15000
P15=P35=PE3 (X3)	1 10	48	250	12000	12000
P17	1 10	7	210	1470	1470
P10	1 10	8	340	2720	2720
P37=P39 (X2)	1 16	24	400	9600	9600
P12	1 10	16	250	4000	4000
P16	1 12,5	14	285	3990	3990
P33	1 16	72	2160	15552	15552
P34	1 16	68	19720	133776	133776
VT1	1 20	6	755	4530	4530
VT2	1 20	8	860	7120	7120



ACO	BIT (mm)	COMPR (m)	CA 50-60	PESO (kg)
50A	8	1338	685	855
50A	10	3704	2334	2916
50A	12,5	638	638	797
50A	16	1562	2900	3625
50A	20	772	8056	10195
Peso Total				8056 kg

OBSERVAÇÕES:
1 - CONFERIR MEDIDAS NO LOCAL
2 -

Eng. MANOEL ORMOND CREA 21.603-D
Rua Colina, 60 loja 10 - Ilha do Governador/RJ
Tel: (21) 3396-0018 / 2462-3283 manoelormond@terra.com.br

CLIENTE: MENDES ALMEIDA ENGENHARIA LTDA
OPERAÇÃO: PAVILHÃO DIVISÃO DE ENSINO INTEGRADO
LOCAL: IME - COOPAB
DESCRIÇÃO: ARMAÇÃO DOS BLOCOS

FATOR MAXIMO AGUA/CEMENTO= 0,5 Fck= 35 Mpa
TOM: S/ESC PROJETO/COMP: 337/11/M06/T0S12 DATA: 27/06/11